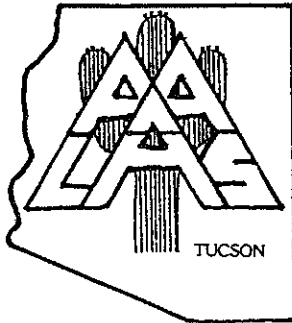


# American Association For Laboratory Animal Science



ARIZONA BRANCH NEWSLETTER  
LOCAL CHAPTER OF THE "AMERICAN  
ASSOCIATION FOR LABORATORY  
ANIMAL SCIENCE"

MARCH 1996

Other branches of AALAS may reprint without prior permission any portion of the content of this letter, provided proper author, title and publication credits, where applicable, are given. The editorial board reserves the right to edit information submitted for publication in the newsletter.

The next general meeting will be at noon Friday, March 22, 1996 in room 8403 of the University Medical Center. Our guest speaker will be Becky Wattam, Research Associate in the Arizona Research Labs. Her talk is entitled, "Observations on Adaptation by the Mosquito *Aedes togoi* to Filarial Nematode Infection."

## MINUTES OF THE PAST MEETING

Our general meeting was held January 22, 1996 in Room 5403 of the College of Medicine. The meeting began at 12:10 p.m. with President Jane Criswell's introduction of the new board members.

Secretary/Treasurer Grace Aranda gave the financial report. The branch currently has about \$6000 in it's various accounts.

Jane informed the members that Dr. Patt Allen is holding training sessions for the AALAS Assistant Laboratory Animal Technicians' exam. The sessions are held Wednesdays at noon in Room 4120 of the College of Medicine. A copy of the schedule will be included in the next newsletter.

Plans for this year's District Eight Meeting are proceeding. The meeting dates are May 20-22, 1996 and will be held at the Doubletree Hotel in Tucson. Room rates for the Doubletree are \$82 single/\$92 double. Registration for the meeting is \$100 per person and includes two lunches and the banquet. There will be a picnic and no-host social on the 19th. A social event the evening of the 20th will be dinner and entertainment at Savoy Opera House. The price is \$25 per person, this includes, transportation, dinner and entertainment.

Jane asked for updates from the District Eight Committees: **Registration committee:** Casey Kilcullen Steiner reported that the committee is waiting for some information from other committees. She needs this information by 1/26/96 to mail out

# When You Demand Quality, Demand Hilltop

## The Finest Research Animals

*Hilltop Lab Animals, Inc. began operations in 1928. Through the years, Hilltop has gained valuable experience and a reputation for supplying the highest quality rats, mice and guinea pigs to the scientific community.*

*From the latest in facility design, to the experienced staff, Hilltop offers the quality and service that research has come to expect.*

*For more information, call or write today.*

## ■ C.V.F. — Certified Virus Free Animals

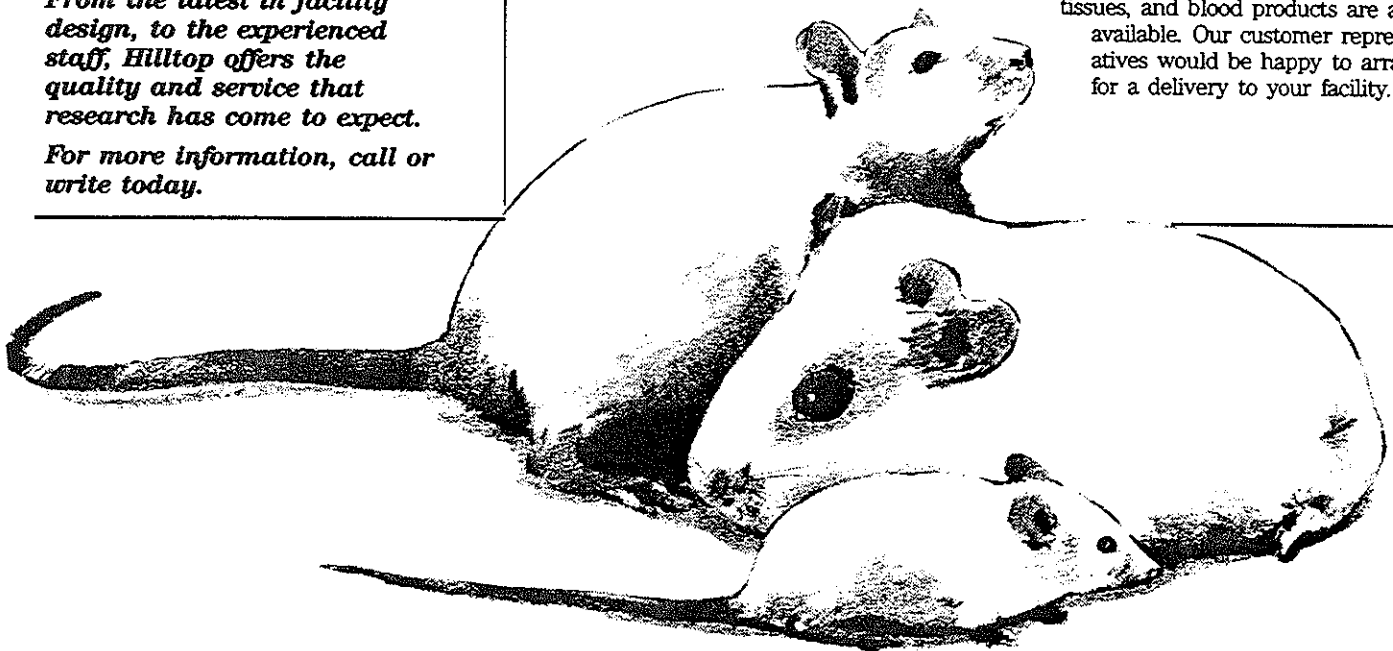
The presence of murine viruses compromises many types of research. The use of C.V.F. animals minimizes the compromise. Specify C.V.F. when ordering Hilltop rats, mice and guinea pigs.

## ■ Surgical Services

Hilltop offers a wide range of routine and custom surgical modifications. In addition to routine surgeries such as adrenalectomies, hypophysectomies, nephrectomies and many others, Hilltop supplies cannulated animals. Specialized cannulae include arterial, vascular, spinal and gastrointestinal cannulae.

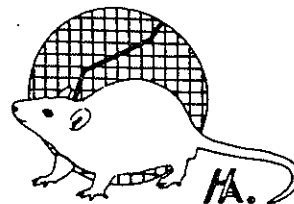
## ■ Other Services

Hilltop provides timed and untimed pregnant rats, mice and guinea pigs. Litter mates, tissues, and blood products are also available. Our customer representatives would be happy to arrange for a delivery to your facility.



## Hilltop Lab Animals, Inc.

Serving Science for more than 50 years  
P.O. Box 183, Scottdale, PA 15683  
1-800-245-6921 or in PA (412) 887-8480  
FAX: 4128873582



## 1996 Arizona Branch Officers

### President

Jane Criswell (520)621-1621

### President Elect

Timothy Martin (602)406-4003

### Immediate Past President

Cindy Richner (520)621-1330

### Secretary/Treasurer

Grace Aranda (520)621-1330

### Board Members

Mark Barton (96) (520)621-1693

Dennis Dreher (97) (520)779-2771

### Technician Branch Representative

Leigh Kleinert (520)626-4707

## COMMITTEES

### Awards

Louise Brooks (520)626-6702

Penny Trovillion (520)779-2771

### Speakers

Timothy Martin (520)406-4003

Cindy Richner (520)621-1330

### Newsletter

Grace Aranda (520)621-1330

Casey Kilcullen-Steiner (520)626-2055

### District 8 Trustees

Peg Murphy-Hackley (97) (415)855-5499

Ron Orta (96) (206)691-6364

**Feel free to call us with any questions**

registration packets the following week. She stressed that vendors have to plan their events months in advance and may bypass our meeting in favor of another if they don't receive our information in a timely manner.

**Vendor/Sponsor committee:** Cheryl Johnson reported that her co-chair, Paul Chavez has done a great job getting information out to vendors about our meeting. They have received 10 paid registrations and five donations to sponsor breaks.

**Abstract/Program committee:** Dr. Susan Sanders reported there still needs to be work done on the program. She and her co-chair, Dr. Donald DeYoung, are working on firming plans on the pig and reptile labs. In case one doesn't work out, she suggested working on an insect lab with Jane's help. Dr. Mike Rand is continuing to work on the Current Issues in IACUC seminar. Dr. Sanders and Dr. Dave Besselsen are working on the Update on Rodent Disease seminar. Jane suggested a Rodent Handling wet lab. **Social Events committee:** Dr. Rand reported that he and his co-chair, Mark Barton, have been working on the social event and have made down payments to the Savoy Opera House, the entertainer and the bus company.

Jane reported she has forms for the AALAS Continuing Education Registry. Anyone needing more information or forms should call Grace at (520)621-1330.

Jane reported that branch dues are due. Dues are \$5 for the Arizona Branch. National dues have changed as follows: Bronze (\$25) - privileges are Information Technology Services, all voting privileges, *Tech Talk*, reduced rates for National Meeting and all other programs (exams, educational materials); Silver (\$50) - all privileges of bronze membership + *Contemporary Topics in Laboratory Animal Science*, AALAS Membership Directory; Gold (\$125) - privileges of silver membership + *Laboratory Animal Science*,

# SPONSORS



TEL (508) 256-2322  
FAX (508) 256-2545

**QUALITY  
GUINEA PIGS**

*Breeding Labs*

7 KIDDER ROAD, CHELMSFORD, MA 01824

---

**NEW "STATE OF THE ART"**

**29,000 SQ FT.  
GUINEA PIG PRODUCTION  
FACILITY**

**SINGLE SPECIES - BARRIER SUSTAINED  
VIRUS ANTIBODY FREE**



**REES  
SCIENTIFIC**  
MONITORING INSTRUMENTATION

**MICHAEL E. ENZLER**  
Regional Sales Manager

8698 ELK GROVE BLVD #3-113  
ELK GROVE, CA 95624  
(800) 327-3141 • VM: 204  
FAX: (916) 684-6381

Regional Office:  
(916) 684-5503

**PAT A. McDERMOTT**  
National Sales Manager



Omaha, Nebraska 68101

1-800-228-4919

**Animal  
Resources  
Management  
Systems**

JOSEPH GERSZTYN

8840 COMPLEX DRIVE, SUITE 105  
SAN DIEGO, CA 92123

619-268-4639  
Fax 619-268-1262  
VOICE MAIL 619-491-9842

**Animal  
Resources  
Management  
Systems**

JOSEPH GERSZTYN

8840 COMPLEX DRIVE, SUITE 105  
SAN DIEGO, CA 92123

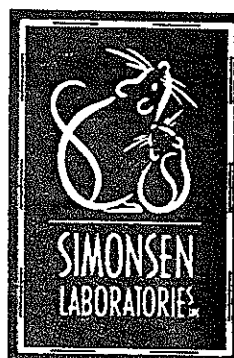
619-268-4639  
Fax 619-268-1262  
VOICE MAIL 619-491-9842

**Harlan  
TEKLAD**

**Harlan Teklad**  
P.O. Box 29176  
Indianapolis, Indiana 46229-0176  
Phone: (317) 894-7521  
Fax: (317) 894-1840

**K. C. REESE**  
Regional Sales Manager

*Excellence begins with breeding and continues with feeding.*



**Ardis K. Roseberry**  
Sales Representative

Office Phone and FAX  
(408) 773-1952

1180-C Day Road  
Gilroy, CA 95020  
(408) 847-2002  
Fax (408) 847-4176

*"Serving Science and Industry for Over 45 Years"*

Pocket Resource Directory. We need to get our roster into National soon so people should send their dues right away.

National has sent out abstract forms for the District meeting in Minneapolis, MN. Anyone needing copies should contact Grace at (520)621-1330. National also has new T-shirts available. The flyer for these will be in the next newsletter.

The meeting adjourned at 12:35 p.m.

## **NEWS FROM THE BOARD - February 9, 1996**

The Annual Meeting and Awards banquet is being planned for October with the installation of new officers held at that time. In an attempt to encourage greater statewide attendance it was suggested that the meeting be held in the Phoenix area. President-Elect, Tim Martin volunteered to look into possible meeting sites. A tour of the Phoenix zoo was mentioned for earlier in the day.

Immediate Past President, Cindy Richner, volunteered to be Education Committee Chairperson. Tim Martin and Cindy Richner have agreed to share the Speakers Committee responsibilities.

The branch continues to have problems getting all areas of the state involved in the branch. In an attempt to make Arizona AALAS more cohesive as a branch, the Board discussed the possibility of spreading branch responsibilities statewide. It was suggested that the northern members publish the branch newsletter. Members of W. L. Gore and Associates have agreed to take over these duties. Dennis Dreher, our Northern board representative, will be the newsletter editor. This will provide the newsletter with fresh viewpoints and perspectives. The board decided to include in the newsletter a President's corner, Letters to the Editor and TBR notes.

The branch wishes to thank Casey Kilcullen-Steiner and Grace Aranda for their many years of dedicated service in editing and publishing the newsletter. They were both presented with a letter of appreciation and pen at a recent joint committee meeting.

District Eight meeting Update: President, Jane Criswell, was appointed Chairperson for the District Eight Meeting. Hugh Harloff, National AALAS President, will be invited to the convention to give the keynote address.

## **SPONSORS**

If you are interested in placing an ad in the newsletter the following price schedules are in effect:

- \$30 for business card size ad
- \$40 for 1/4 page size
- \$60 for 1/2 page ad
- \$85 for full page ad

Each ad will run four times during the year. In addition, if your organization has any general announcements and/or articles which would be of interest to our members, please feel free to send them to us for publication. Please send copy to Grace Aranda: Arizona AALAS, PO Box 210101, Tucson, AZ 85721.

# SPONSORS



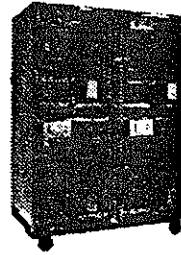
P.O. Box 1589  
Granite Falls, WA 98252  
360-691-6364  
FAX: 360-691-6446

Ron Orta  
Technical Consultant

**Allentown Caging Equipment Co., Inc.**

Route 526, P.O. Box 698  
Allentown, NJ 08501-0698

1-800-762-2243  
FAX: 609-259-0449



**Suburban  
Surgical  
Company, Inc.**

**1-800-323-7366**

Phone: (708) 537-9320 Fax: (708) 537-9061

Designers & Manufacturers of Stainless Steel  
Equipment for the Care & Housing of Lab Animals  
275 Twelfth Street • Wheeling, IL 60090

**The Leader In Laboratory Animal  
Facility Sanitation**



**Paul Chavez**

33 Great Hill Road  
Naugatuck, Connecticut 06770  
203 729-5237 800 243-5350 Fax 203 729-5230

STEPHEN C. BOB  
SALES REPRESENTATIVE LIFE SCIENCES



**AMSCO**

**AMSCO INTERNATIONAL, INC.**

WEST AREA OFFICE  
1210 E. CAMPBELL RD. • SUITE 100  
RICHARDSON, TEXAS 75081-1999  
214-234-2471 800-333-8838  
VOICE MAIL 800-807-8955 EXT. 3787  
FAX 214-234-8803

1-800-645-6379 Outside N.Y.  
(516) 781-0755  
Fax (516) 781-4937

MITCHELL KANAREK  
President



**ancare CORP.**

2647 Grand Avenue, P.O. Box 814  
Bellmore, NY 11710

SYSTEMS AND SUPPLIES FOR ANIMAL CARE

**Edstrom INDUSTRIES, INC.**

819 Bakke Avenue Waterford, WI 53185

**Skeeter Georgeson**  
Laboratory Sales Consultant

800-345-8074 Ext. 380 FAX 714-639-9972

Where Technology Practical Solutions Meet

*Your complete research animal resource.*

**Harlan  
SPRAGUE  
DAWLEY**

Harlan Sprague Dawley, Inc.  
P.O. Box 29176  
Indianapolis, Indiana 46229-0176  
Phone: (317) 894-7521  
Fax (317) 894-1840

K. C. REESE  
Regional Sales Manager



**Charles River  
LABORATORIES**



PATRICIA V. WILKENS  
Manager, Telesales  
1-800-LAB-RATS



Accredited by the  
Dutch Council  
for Certification

## **ATTENTION TECHNICIANS**

AALAS is interested in your experience(s) as a technician. We would like to get involved and share your knowledge. Each time Contemporary Topics is published there is a section for technician tips. Please make an effort to submit an article for the COLAT BRIEF of Contemporary Topics. Call Leigh Kleinert (520)626-4707 if you would like help or need additional information.

## **AZ AALAS TO HOST 1996 DISTRICT EIGHT MEETING**

The Arizona Branch of AALAS will be hosting the 1996 meeting in Tucson, Arizona and we need volunteers to make this meeting a success. The following committees still need volunteers:

**Audiovisuals** - technicians to operate them  
**Autotutorials** - arranges room, equipment & supplies  
**Moderators** - arranges for moderators  
**Printed Program** - puts together the meeting program  
**Security** - security personnel for our meeting room  
**Transportation** - arranges for travel labs and other events  
**Wetlabs** - arranges for the hands-on wet labs

If you would like to volunteer contact Jane Criswell or Grace Aranda at (520)621-1330.

## **CERTIFICATION EXAMS**

*How do I get a certification application or information about the AALAS Animal Technician Certification Program?*

Call Grace at (520)621-1330 for an application pamphlet.

### **1996 Certification Program Changes**

Several changes will be occurring in the AALAS Certification Progress in 1996. The following is a brief listing:

- The testing sites will now be known as Sylvan Prometric. Drake Prometric has merged with Sylvan Learning Centers.
- Candidates will now have 12 weeks (no longer six months) from the date on their PES approval letters in which to schedule and sit for their exams.
- The 1996 version of the Candidate Application Handbook will be placed into use by PES in the near future.

**"The new system is extremely convenient . . . The computerized format helps the testing go very quickly."**

**An Exciting New Era in  
AALAS Certification**

AALAS has teamed up with the Professional Examination Service and Drake Training and Technologies to provide you with the finest expertise in test development and administration in the country. Through this partnership, all AALAS Certification examinations are completely computerized and readily available at over 300 computer centers nationwide. Individual candidates are able to arrange for a test at their convenience, and computerized tests provide immediate results upon completion.

—Hillary Gorman, BA, ALAT  
UCSF Animal Care Facility  
San Francisco, CA

**To apply, contact**  
AALAS  
70 Timber Creek Dr.  
Cordova, TN 38018  
901-754-8620  
fax 901-753-0046

**The  
AALAS  
Certification  
Program**



**Leadership is...**

**A Commitment to Quality,  
Professionalism, Service, The Industry,  
The Future and Our Customers.**

- Rats • Mice • Hamsters • Gerbils • Rabbits • Guinea Pigs • Fish
- Miniature Swine • Large Animal Services • Surgical Services • Semi-Rigid Isolators
- Transgenics & Special Animal Services • Transgenic Models
- Laboratory Services • Custom Monoclonal & Polyclonal Antibody Production
- LAL Test Products • SPF Chicken Eggs



**Charles River**  
LABORATORIES

*Contributing to the Search for Healthier Lives™*

**1-800-LAB-RATS**

URL: <http://www.criver.com>

E-Mail: [comments@criver.com](mailto:comments@criver.com)





- Application forms completed using the 1995 Handbook (1/95 in lower left-hand corner of front cover) will only be accepted by PES until April 1, 1996.
- A new postcard will be included in the 1996 Handbook. If filled out, stamped, and mailed with the application, PES will date stamp it and return it verifying receipt of the application.

For further information on the testing process contact AALAS (901)754-8620.

## **WHAT'S NEW IN THE NEWS?**

### **Charles River PharmServices Customer Announcement, January 26, 1996**

Charles River East Acres Biologicals announces a corporate name change that is effective immediately. The new name, Charles River PharmServices, has been selected to better reflect the company's focus on providing R&D and pre-clinical research services to the global biomedical community.

Charles River PharmServices is located on a 350-acre research farm with more than 2,000 square feet of modern laboratory space and over 40,000 square feet of animal quarters. The company has been providing custom polyclonal antibody production and custom large animal services including expertise in surgical applications, device testing, and efficacy studies for 17 years.

For further information on Charles River PharmServices, please contact Bob Doolin, President & General Manager, by phone at 508-765-9580 or by fax at 508-765-1288.

(Charles River PharmServices, 1/26/96)

### **Revised ILAR Guide is Completed**

Prepublication copies of the revised *Guide for the Care and Use of Laboratory Animals* of the National Academy of Science's Institute of Laboratory Animal Resource, ILAR, were delivered last week. A complimentary copy has been sent to the principal contact at each NABR member institution. Institutions are permitted to photocopy and distribute the prepublication *Guide* to the appropriate staff. When published in final form in a few months, the *Guide* will be available to the public in both print and electronic forms.

This edition appears not to be so significantly different in terms of subject matter as it is expanded and updated. In general, there are more recent references throughout the text and an extensive current bibliography.

(San Diego AALAS News, V 16, N 1)

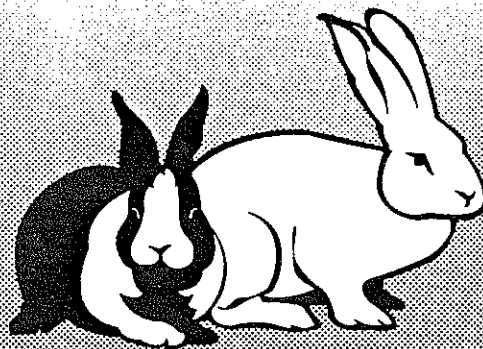
### **LATG Correspondence Course**

Are you preparing for your LATG exam but just don't know what to study? Aren't sure you are fully prepared? You might be interested in the new LATG Correspondence

# MYRTLE'S. THE FIRST NAME IN SPF RABBITS.

*Because Myrtle's name is on the line every day, we're just plain picky. Since 1977, we've provided the nation's most persnickety clients with top-quality, competitively priced rabbits delivered right on time . . . with satisfaction guaranteed.*

## MYRTLE'S RABBITRY



## INCORPORATED

1.800.424.9511

*For genuine personal attention, call Myrtle's today.*

Program being presented by Redlands Community College in El Reno, Oklahoma, and endorsed by AALAS.

The curriculum of three subject area components: animal husbandry, facility/program management, and animal health and welfare. Units with each subject area parallel the LATG Basic Course Outline developed by AALAS for the LATG certification exam.

You may enroll for either a certification of completion (\$350) or 13 hours of college credit (\$523.35 for OK residents/\$1,303.25 for nonresident). For more information, contact either Dr. Delores Meyer, Redlands Community College, 1300 S Country Club Road, El Reno, Oklahoma. 73036-5304; (403)422-1256; fax:(405)422-1200, or Jill Worley at the national AALAS office.

### New Study Guide for Technicians

By the end of February a new study guide should be available to assist technicians in preparing for their AALAS certification exams. It will include the updated Basic Course Outlines and revised Educational Materials Reference List for each of the three certification levels, a Guide to Computerized Testing, and a 1996 Testing Process Flow Chart. This Study Guide should prove invaluable to technicians preparing for their exams and be helpful to instructors in course preparation.

The cost of the new Study Guide is \$10 for national AALAS members and \$20 for nonmembers. If you would like to purchase a copy please contact the AALAS office for an order form.

### Registry Deadline Approaching

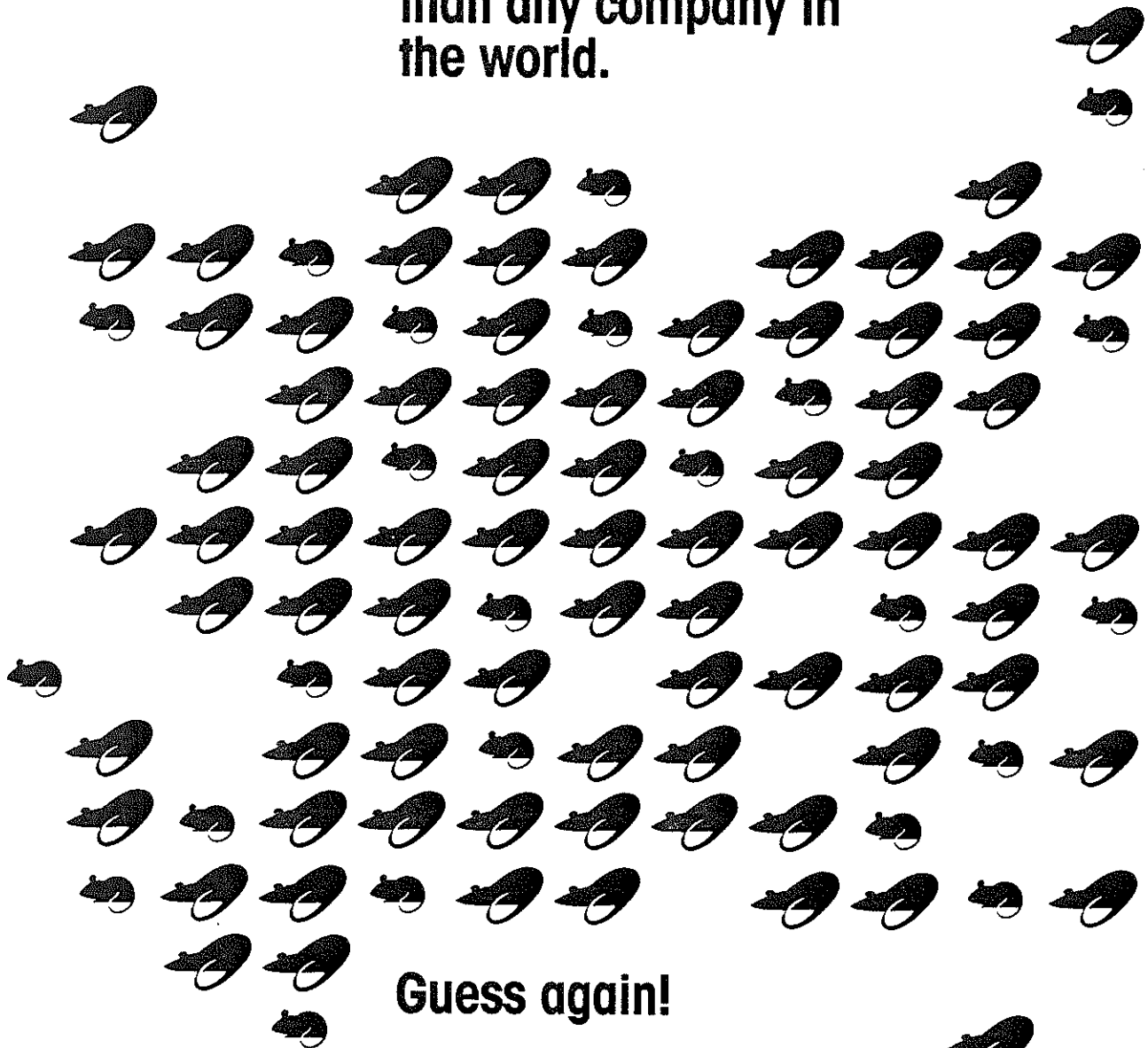
If you plan to participate in the AALAS Continuing Education Registry for the 1995 calendar year, the deadline for returning the application form is March 31, 1996. To participate you must be a certified ALAT, LAT, or LATG technician and/or an ILAM graduate, be a national Silver or Gold AALAS member, and meet the CE Registry requirements. Registry instructions and application forms can be obtained by calling Victor McDonald at the AALAS office.

### New Technician Newsletter

If you join AALAS as a Gold, Silver or Bronze member, you will receive copies of the new Tech Talk newsletter. Tech Talk is a quarterly newsletter designed for animal care technicians and is of interest to anyone working in the laboratory animal science field. It is full of interesting and educational articles, tidbits, techniques, and ideas.

We would like to publish as many technician items as possible, so we need your help! If you have something you think others would like to know - streamlining tips, environmental enrichment ideas, special techniques - please send them to Jill Worley, Tech Talk editor, AALAS, 70 Timber Creek Drive, Cordova, TN 38018-4233 or fax to (901)753-0046. See your name in print!

**Guess who offers more  
stocks and strains of  
commercially bred  
laboratory rats and mice  
than any company in  
the world.**



**Guess again!**

With over 250 stocks and strains of lab mice and rats, Harlan Sprague Dawley provides the animals which are important to your research, not just those which are important to our profitability.

Harlan Sprague Dawley, Inc.  
P.O. Box 29176  
Indianapolis, IN 46229  
Phone: (317) 894-7521  
FAX: (317) 894-1840

**Harlan**  
**SPRAGUE**  
**DAWLEY**

## Technician Profiles Wanted

Each issue of Contemporary Topics will highlight one or more national AALAS certified technicians (ALAT, LAT, LATG) in a short, boxed article called "Technician Profiles." These profiles will provide an opportunity for technicians and other AALAS members to learn more about their fellow workers and will also allow AALAS to recognize as many technicians as possible for the hard work they do each day and their dedication to the field of lab animal science.

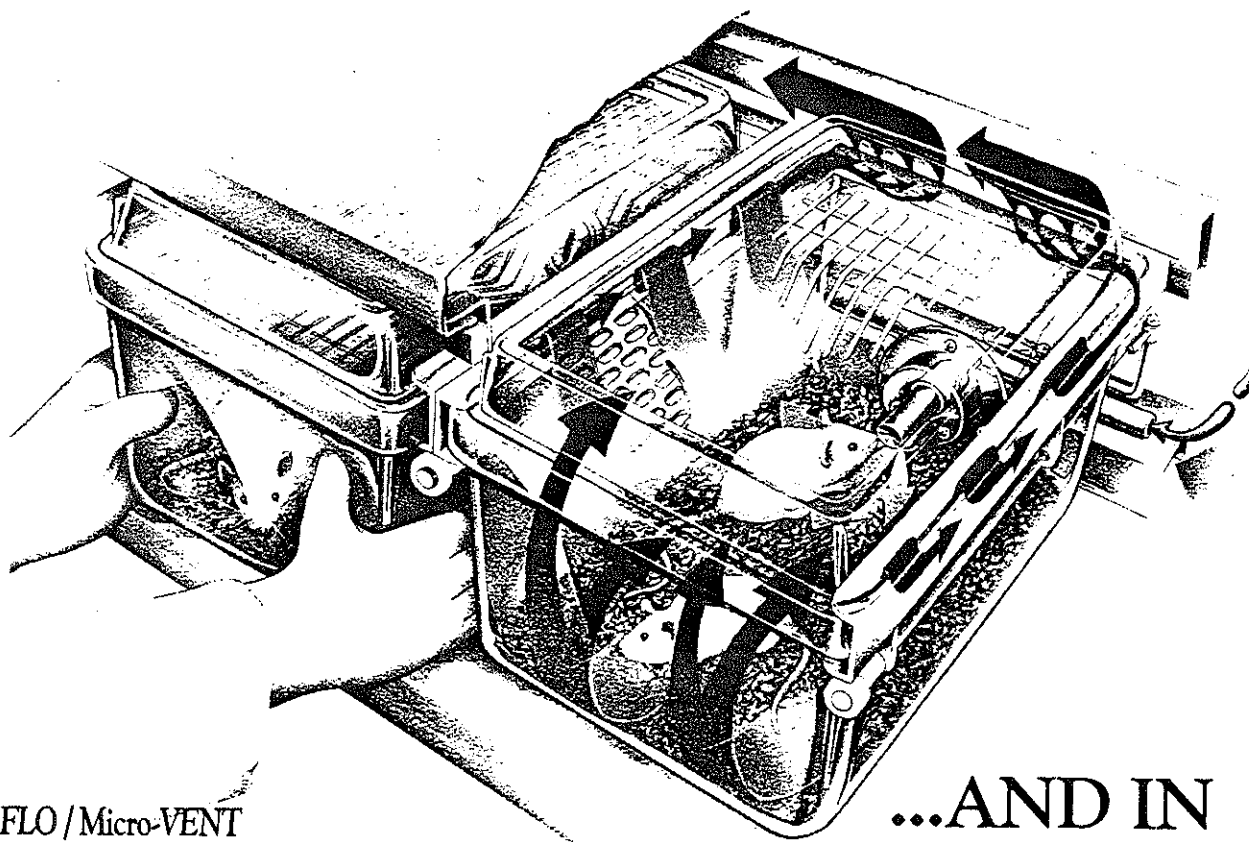
If you are interested in being recognized for all you do, contact the Technician Branch Representative (TBR) of your local branch or the AALAS National Office for the appropriate form. Simply complete the form and return it to the AALAS office.

(AALAS Hot sheet, January 1996)

**The following meetings are already on the calendar:** (Dates not shown go to year 2000)

3/10-14/96 - Society of Toxicology Annual Meeting	(703)438-3115
3/12/96 - Chicago Branch Meeting - Brookfield Zoo	(312)942-6576 Brian
3/12/96 - Kentucky Branch Meeting	(502)227-6197 Joyce
3/13/96 - New England Branch Meeting	(607)335-2643 Kim
3/13/96 - ARENA - Boston (East Coast)	(617)423-4112 Joan
3/13/96 - S California Branch Board Meeting	(818)301-8270 Ken
3/14/96 - Metro St Louis Branch Meeting	(314)362-4516 Nicole
3/14/96 - National Capital Area Branch Meeting	(202)994-2871 Rich
3/14-15/96 - PRIM&R Conference - Boston	(617)423-4112 Joan
3/14/96 - Central Illinois Branch Meeting	(213)333-8161 Terri
3/16/96 - ARENA - San Diego (West Coast)	(617)423-4112 Joan
3/17-18/96 - PRIM&R Conference - San Diego	(617)423-4112 Joan
3/22/96 - Arizona Branch General Meeting	(520)621-1330 Grace
3/19/96 - Indiana Branch Meeting	(812)855-2356 Russell
3/19/96 - New Jersey Branch Meeting	(201)503-8358 Amber
3/20/96 - S Ohio Branch Scientific Meeting	(513)533-8152 Diana
3/21/96 - Mile High Branch Meeting	(303)424-6781 Ellen
3/26-27/96 - 6th Annual AAMI/FDA Intl Standards Conference	(703)525-4890 Laura
3/27/96 - Oregon Branch Meeting	(503)494-4271 Dan
4/4/96 - San Diego Branch Meeting	(619)622-5509 Gary
4/96 - S California Branch Spring Fling	(310)855-7780 Linda
4/8/96 - Arizona Branch Board Meeting	(520)621-1330 Grace
4/9/96 - Chicago Branch Meeting - Baxter Corp	(312)942-6576 Brian
4/9/96 - Kentucky Branch Meeting	(502)227-6197 Joyce
4/9/96 - Minnesota Branch Meeting	(612)733-8586 Jill
4/11/96 - Arkansas Branch Meeting	(501)543-7476 Barbara
4/11/96 - National Capital Area Branch Meeting	(202)994-2871 Rich
4/14-17/96 - FASEB Experimental Biology Conference - DC	(301)530-7010 Nancy
4/16/96 - Indiana Branch Meeting	(812)855-2356 Russell
4/17/96 - S Ohio Branch Technician's Day	(513)533-8152 Diana
4/17-19/96 - District 4 Annual Meeting - Knoxville, TN	(404)355-4884 Ed
4/21-24/96 - ACLAM Forum - Annapolis, MD	(919)859-5985 Charles

# THERE ARE CHANGES IN THE AIR...



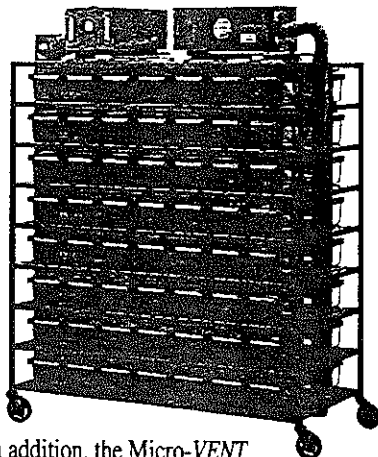
## Micro-FLO / Micro-VENT

Your Final Choice in Micro Environments and Risk Assessment.

In this decade of sophisticated and expensive animal models, maintaining a healthy micro-environment enhances your ability to achieve the bottom line... **quality research**. Allentown Caging has developed through rigid design protocols and extensive testing, MicroFLO/Micro-VENT... the next generation of cost efficient, reliable and technologically advanced environmental systems.

## Micro-FLO

The Micro-FLO Systems are designed to provide High Efficiency Particulate Air (HEPA) at low velocities into the Micro-BARRIER rodent housing system.



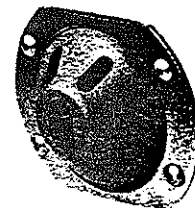
## Micro-VENT

The Micro-VENT full ventilation (positive air cage supply and negative air exhaust) HEPA filtered air flow systems are designed with the salient characteristics supplying positive air to the cage as in the Micro-FLO Systems. In addition, the Micro-VENT provides the capture of effluent air exhaust from each cage that escapes from the cage/lid perimeter.

## ...AND IN THE WATER

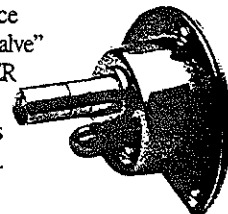
### DRIP-KUP

The stainless steel Drip-KUP design allows the standard Edstrom watering valve to enter the cage maintaining the BARRIER integrity.



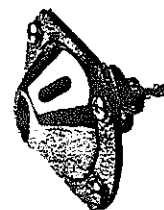
### CLICK DISCONNECT

Positive locking watering device featuring the Edstrom "Shielded Valve" located *within* the Micro-BARRIER cage system. This design allows sterilization of all cage components that will contact the animal models.



### SSV-Sterile Safe Valve

Designed for the *ultimate* in protection against airborne pathogens. The patented "Sterile Safe Valve" allows the drinking valve to travel with the Micro-BARRIER Unit for sterilization *and* CAPTURES any spillage directly into the drip trough and outside of the cage.



**Allentown Caging Equipment Co., Inc.**

Route 526, P.O. Box 698, Allentown, N.J., USA 08501-0698  
(609) 259-7951 Fax: (609) 259-0449

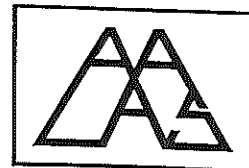


Made in USA

US Patent Numbers,  
4,699,088 5,000,120  
5,148,766 5,307,757

# 1996 AALAS Membership Application Form For New Individual Members

This form is invalid after December 31, 1996. Membership in an AALAS Branch is not automatic membership in the National Association. Please type or print legibly.



# 1

First Name \_\_\_\_\_ Middle Initial \_\_\_\_\_ Last Name \_\_\_\_\_

Title/Position \_\_\_\_\_

Depart/Division \_\_\_\_\_

Company/Institution \_\_\_\_\_

Mailing Address \_\_\_\_\_

City \_\_\_\_\_ State \_\_\_\_\_ Zip \_\_\_\_\_

Shipping Address \_\_\_\_\_

City \_\_\_\_\_ State \_\_\_\_\_ Zip \_\_\_\_\_

Daytime Phone \_\_\_\_\_ Fax \_\_\_\_\_

Social Security Number \_\_\_\_\_ E-mail \_\_\_\_\_

# 2

**Application Sponsor:** All new applicants are required to have at least one current National AALAS Member's signature listed below.

Print National Member Name \_\_\_\_\_ Membership Number \_\_\_\_\_

Signature \_\_\_\_\_

# 3

**Branch Membership:** List AALAS Branch to which you belong. If you belong to more than one, list primary branch first.

Name of Branch \_\_\_\_\_

# 4

## Education/Workplace Information:

### Education Level

- ☐ High School/GED
- ☐ Associate Degree
- ☐ Undergraduate
- ☐ Masters
- ☐ Doctorate
- ☐ Post Doctorate
- ☐ Other \_\_\_\_\_

### Certification Level

- ☐ ALAT ☐ RILAM
- ☐ LAT ☐ RVT
- ☐ LATG

### Area of Employment

- ☐ Teaching/Training
- ☐ Commercial
- ☐ Research
- ☐ Administration
- ☐ Animal Care
- ☐ Medical
- ☐ Other \_\_\_\_\_

### Type of Facility

- ☐ College/University
- ☐ Pharmaceutical Co.
- ☐ Government Research
- ☐ Other Industrial Co.
- ☐ Veterinary School
- ☐ Animal Hospital
- ☐ Private Research
- ☐ Commercial Breeder
- ☐ Other \_\_\_\_\_

# 5

**Membership Levels:** Choose one membership level.

## GOLD

- ☐ Domestic / \$125
- ☐ Canada or Mexico / \$140
- ☐ International / \$165
- 1 All voting privileges
- 2 Reduced rates for National Meeting and all other programs (exams & educational materials)
- 3 **ALPHA** Info. Tech. Services
- 4 *Tech Talk* (4-page quarterly newsletter)
- 5 Subscription to *Contemporary Topics in Laboratory Animal Science*
- 6 AALAS Membership Directory
- 7 Subscription to *Laboratory Animal Science*
- 8 Pocket Resource Directory

## SILVER

- ☐ Domestic / \$50
- ☐ Canada or Mexico / \$60
- ☐ International / \$80
- 1 All voting privileges
- 2 Reduced rates for National Meeting and all other programs (exams & educational materials)
- 3 **ALPHA** Info. Tech. Services
- 4 *Tech Talk* (4-page quarterly newsletter)
- 5 Subscription to *Contemporary Topics in Laboratory Animal Science*
- 6 AALAS Membership Directory

## BRONZE

- ☐ Domestic only / \$25
- 1 All voting privileges
- 2 Reduced rates for National Meeting and all other programs (exams & educational materials)
- 3 **ALPHA** Info. Tech. Services
- 4 *Tech Talk* (4-page quarterly newsletter)

more on other side

**6****Method of Payment:** Please indicate your method of payment:☐ Check   ☐ Money Order   ☐ VISA   ☐ MasterCard

--	--	--	--	--	--	--	--	--	--	--	--	--	--	--	--	--	--	--	--

Account Number—please include all digits

Month			Year		
-------	--	--	------	--	--

Expiration Date

Print exact name appearing on credit card

Signature \_\_\_\_\_

**Note:** Membership is for the calendar year. Payment must be enclosed with this application. Individuals using a purchase order will be billed; however, the membership is not processed until payment is received.

Payments from Canada, Mexico, and International countries must be paid in USA dollars and issued from a USA bank.

Make checks payable to: **AALAS**

FOR OFFICE USE ONLY

**7****AALAS Foundation Contribution:**

If you wish to make a *tax-deductible* contribution to the AALAS Foundation, please enclose a separate check made out to AALAS Foundation:

☐ **YES**, my contribution is enclosed for the amount of \$ \_\_\_\_\_**8****Amount Enclosed:**

Dues enclosed \$ \_\_\_\_\_

Foundation donation \$ \_\_\_\_\_

TOTAL ENCLOSED \$ \_\_\_\_\_

**9****I hereby apply for Individual Membership in the American Association for Laboratory Animal Science.**

Signature \_\_\_\_\_ Date \_\_\_\_\_

**10****Return This Application to:**

AALAS  
70 Timber Creek Drive  
Cordova, TN 38018-4233  
(901) 754-8620  
fax (901) 753-0046

*Please do not write in the space below:*